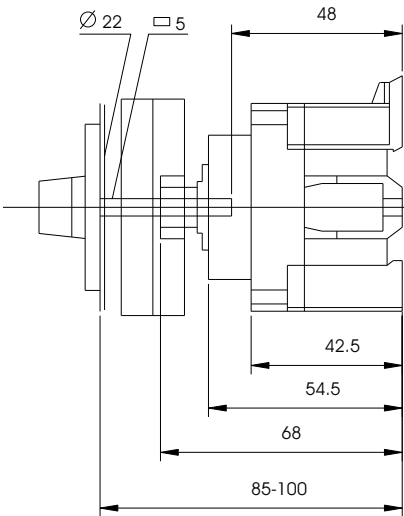
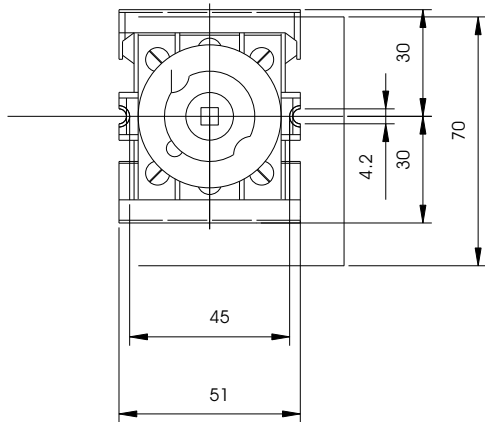


CSSD 25, 40 D1/D4

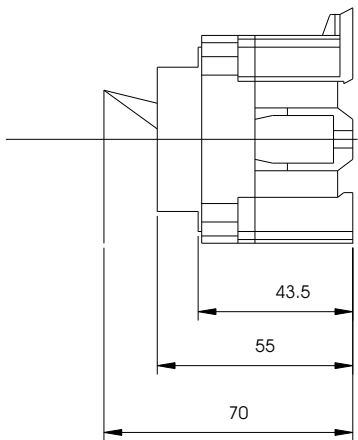
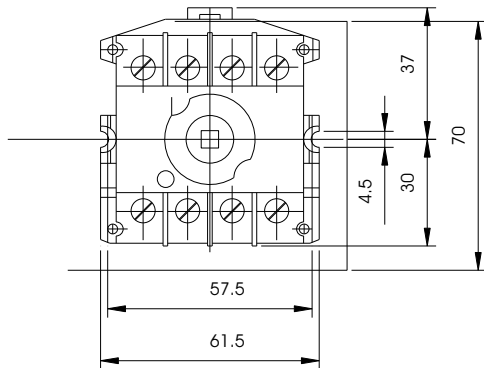


CSSD 25, 40 D1/C1



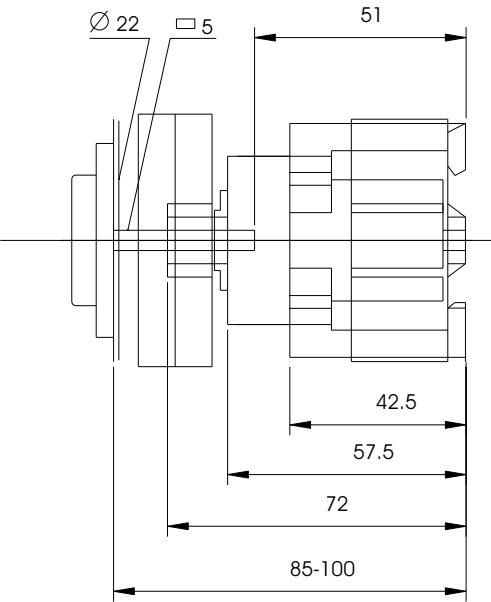
CSSD 25, 40 C1/C4

CSSD 25, 40 D4/C4

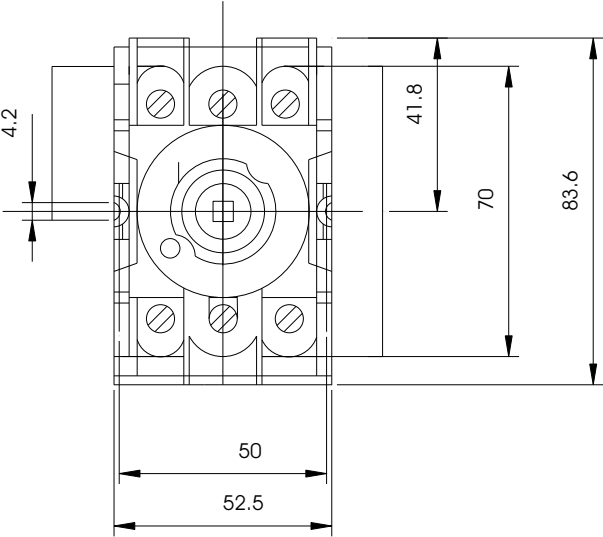


HANDLE CSSD ZX 104

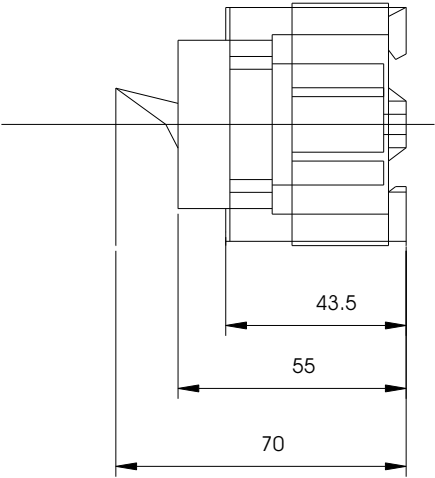
CSSD 63 K3



CSSD 63 K3/C3

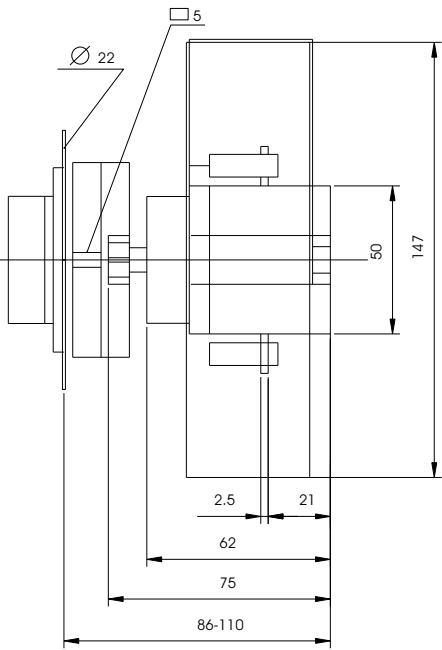


CSSD 63 C3



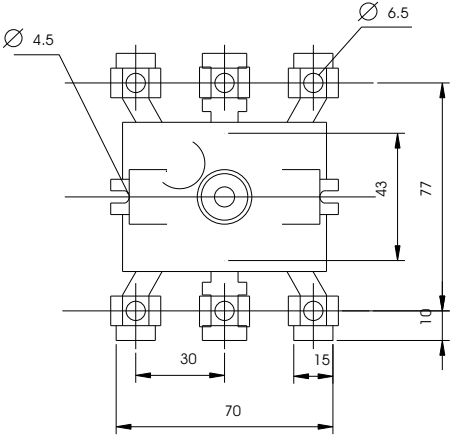
HANDLE CSSD ZX 104

CSSD 125 D1
CSSD 63 D4 / 125 D4

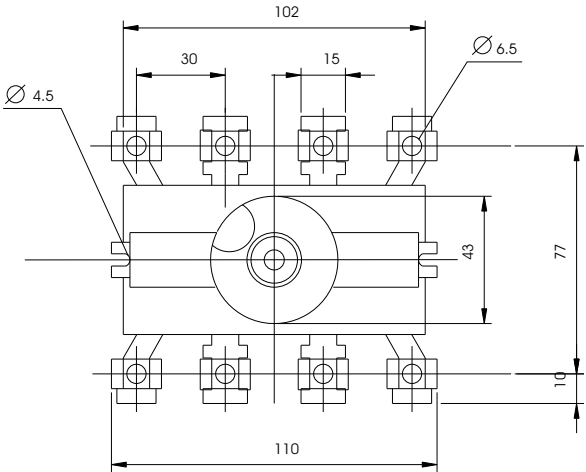


HANDLE CSSD ZX 104

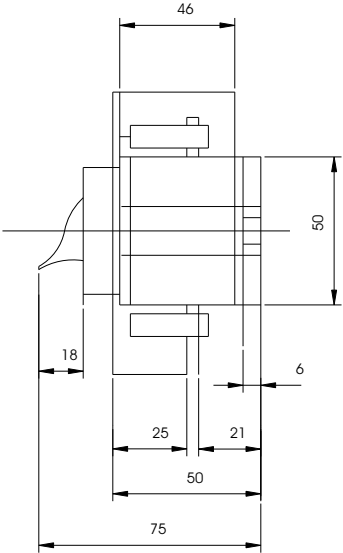
CSSD 125 D1/C1



CSSD 63 D4 / 125 D4/C4

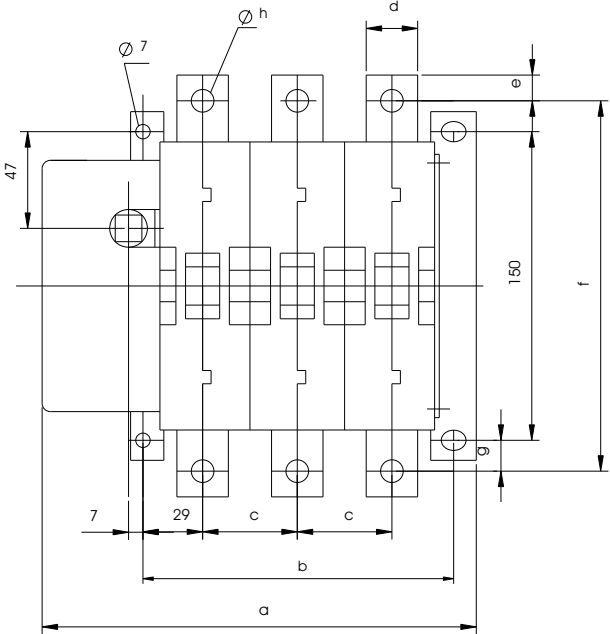
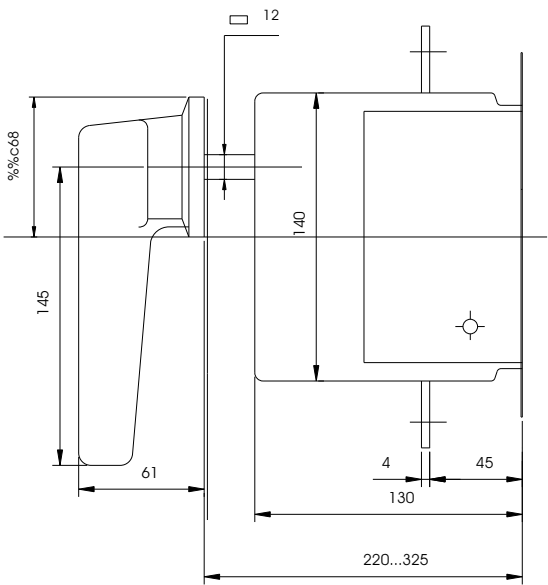


CSSD 125 C1/C4



Handle
CSDb 16
Shaft:
Sq. 12x255

CSSD 200 D
CSSD 250 D
CSSD 400 D
CSSD 630 K
CSSD 800 K



TYPE OF SWITCH	DIMENSION							
	a	b	c	d	e	f	g	h
CSSD 200 D1	211	151	46	25	12.5	180	15.0	11.0
CSSD 200 D4	257	197	46	25	12.5	180	15.0	11.0
CSSD 250 D1	211	151	46	25	12.5	180	15.0	11.0
CSSD 250 D4	257	197	46	25	12.5	180	15.0	11.0
CSSD 400 D1	211	151	46	25	12.5	180	15.0	11.0
CSSD 400 D4	257	197	46	25	12.5	180	15.0	11.0
CSSD 630 K3	244	183	62	40	19.0	185	17.5	13.5
CSSD 630 K4	306	245	62	40	19.0	185	17.5	13.5
CSSD 800 K3	260	199	70	40	19.0	185	17.5	13.5
CSSD 800 K4	330	269	70	40	19.0	185	17.5	13.5

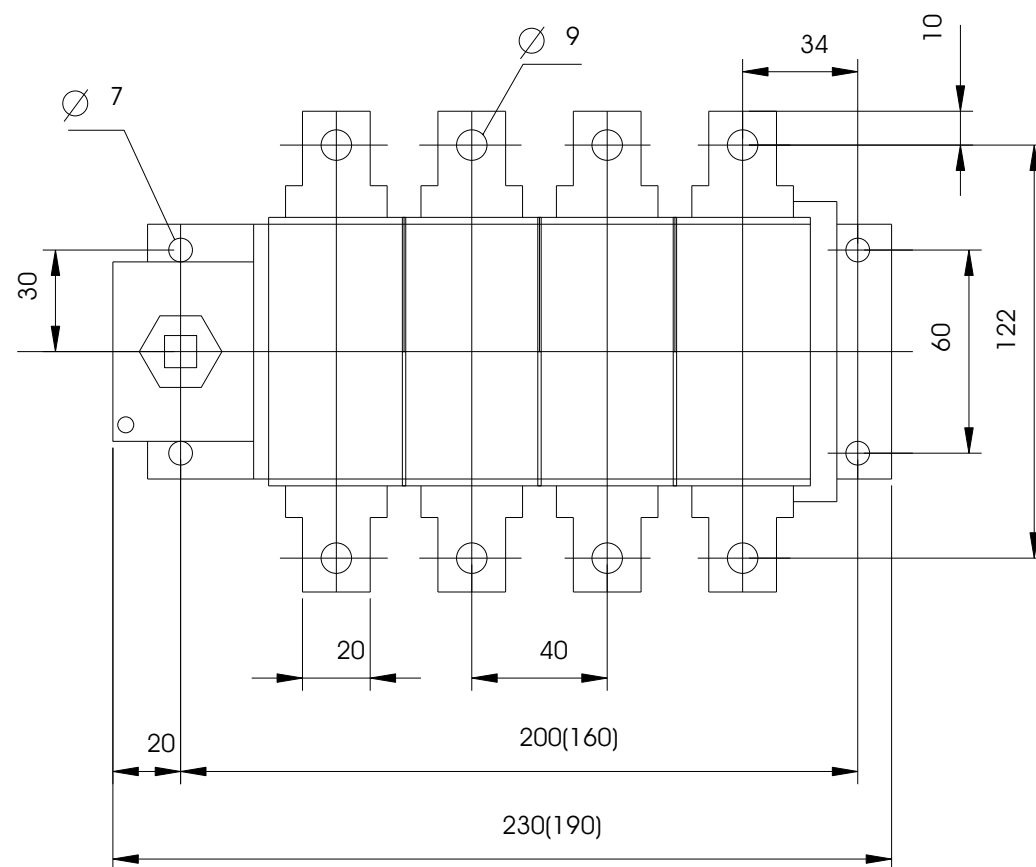
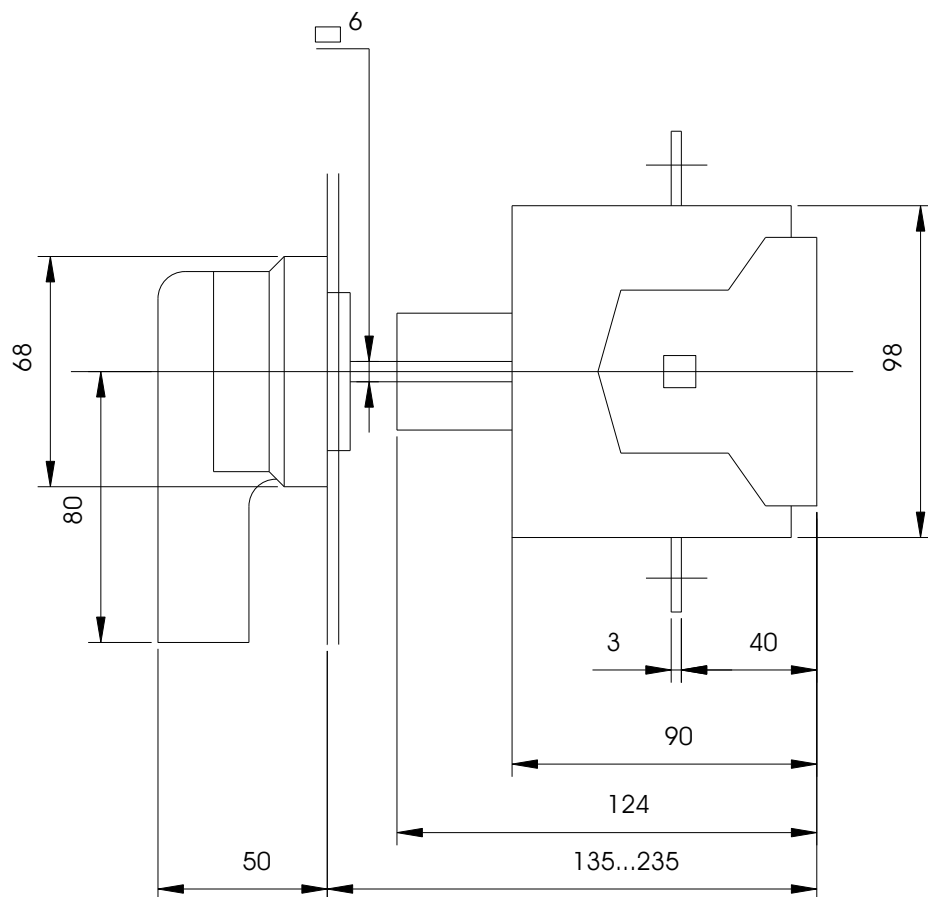
Handle:

CSDB 20

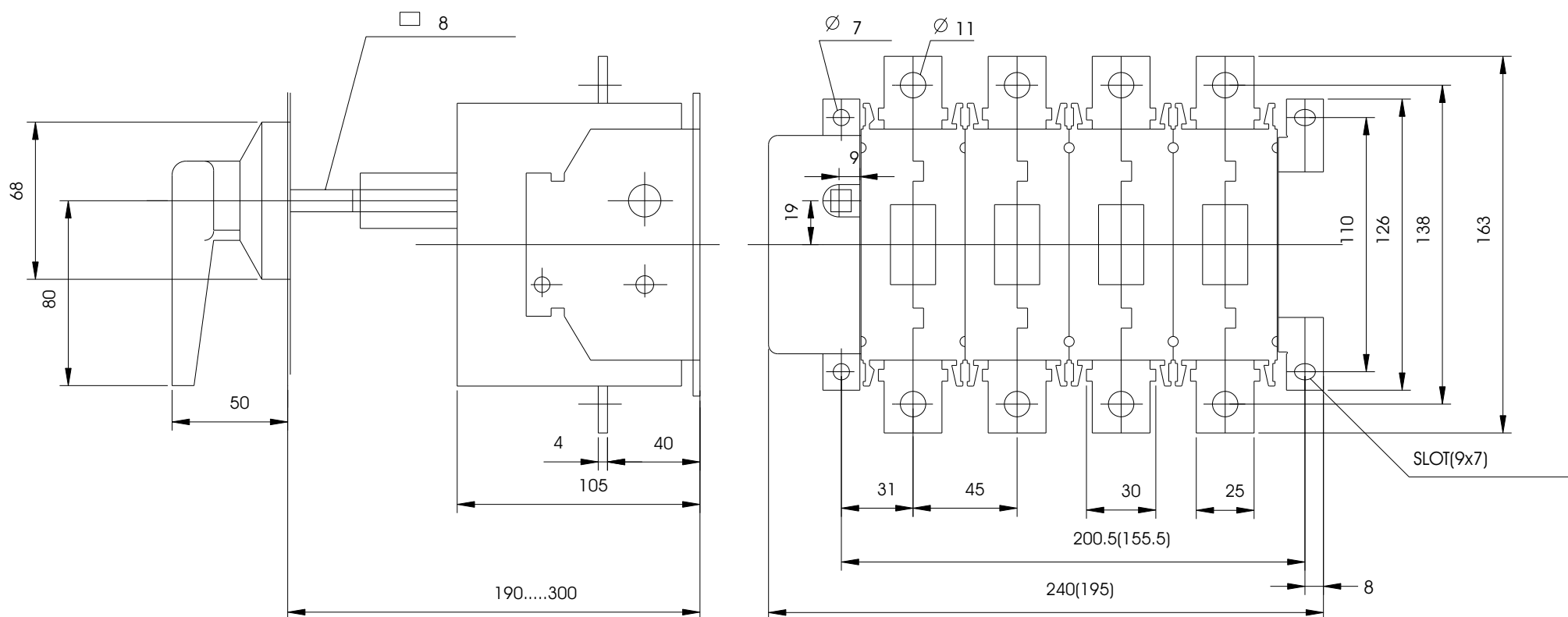
Shaft:

Sq. 6 x 165

CSSF 160 D1/D4



Sq. 8x240



Handle:

CSDA 8

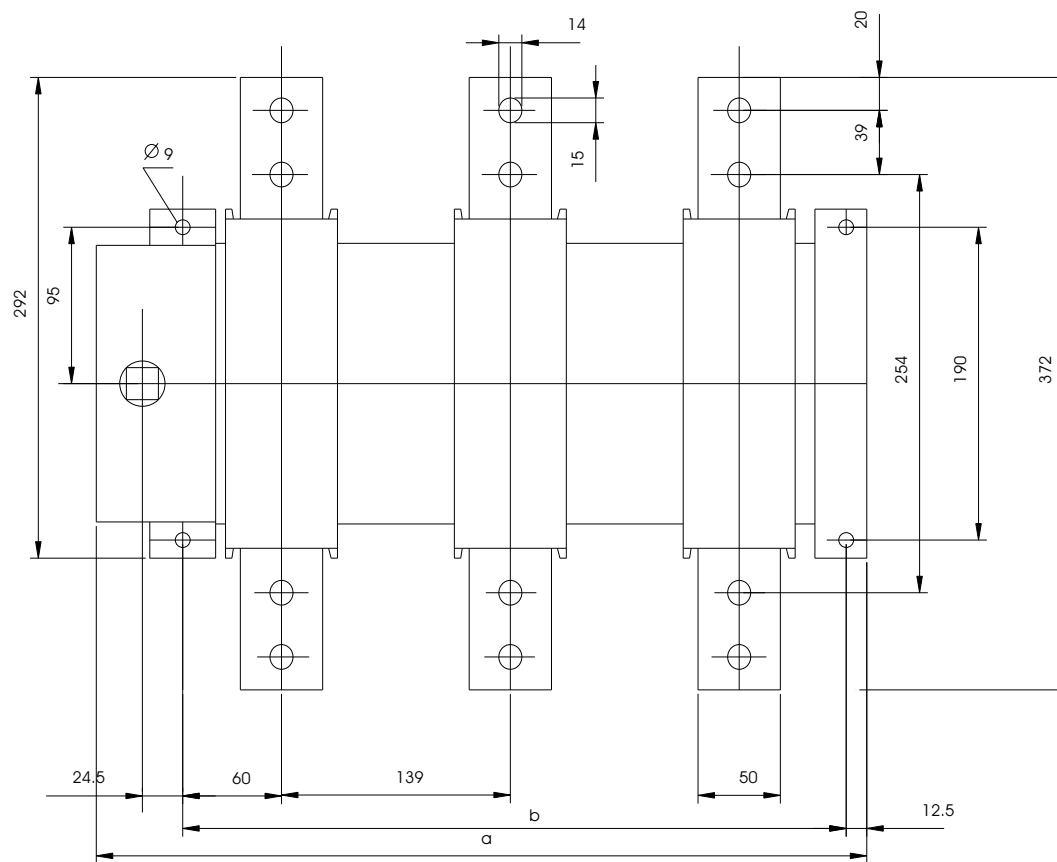
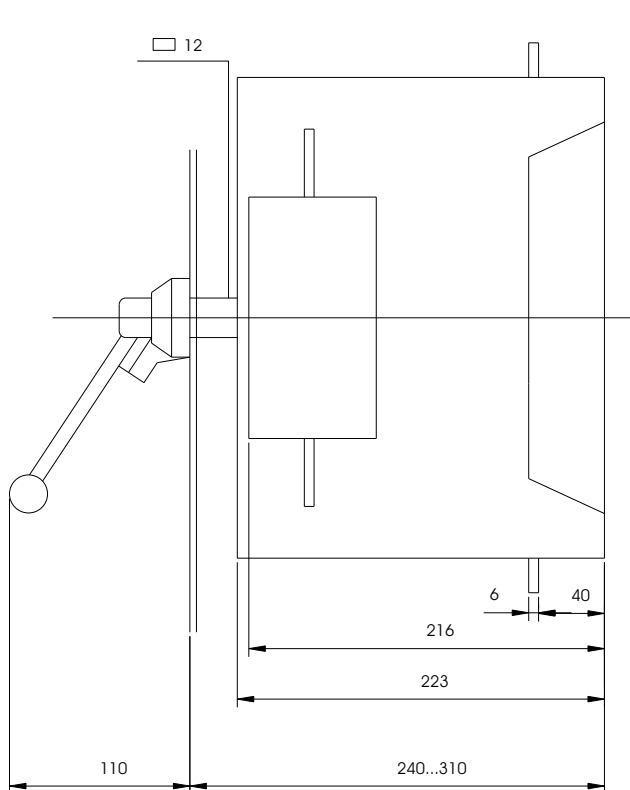
Shaft:

Sq. 12x325

CSSD 2500 K

CSSD 3150 K

TYPE OF SWITCH	DIMENSION	
	a	b
CSSD 2500 K3	468	403
CSSD 2500 K4	607	542
CSSD 3150 K3	468	403
CSSD 3150 K4	607	542



Handle:

CSDB 8 **

Shaft:

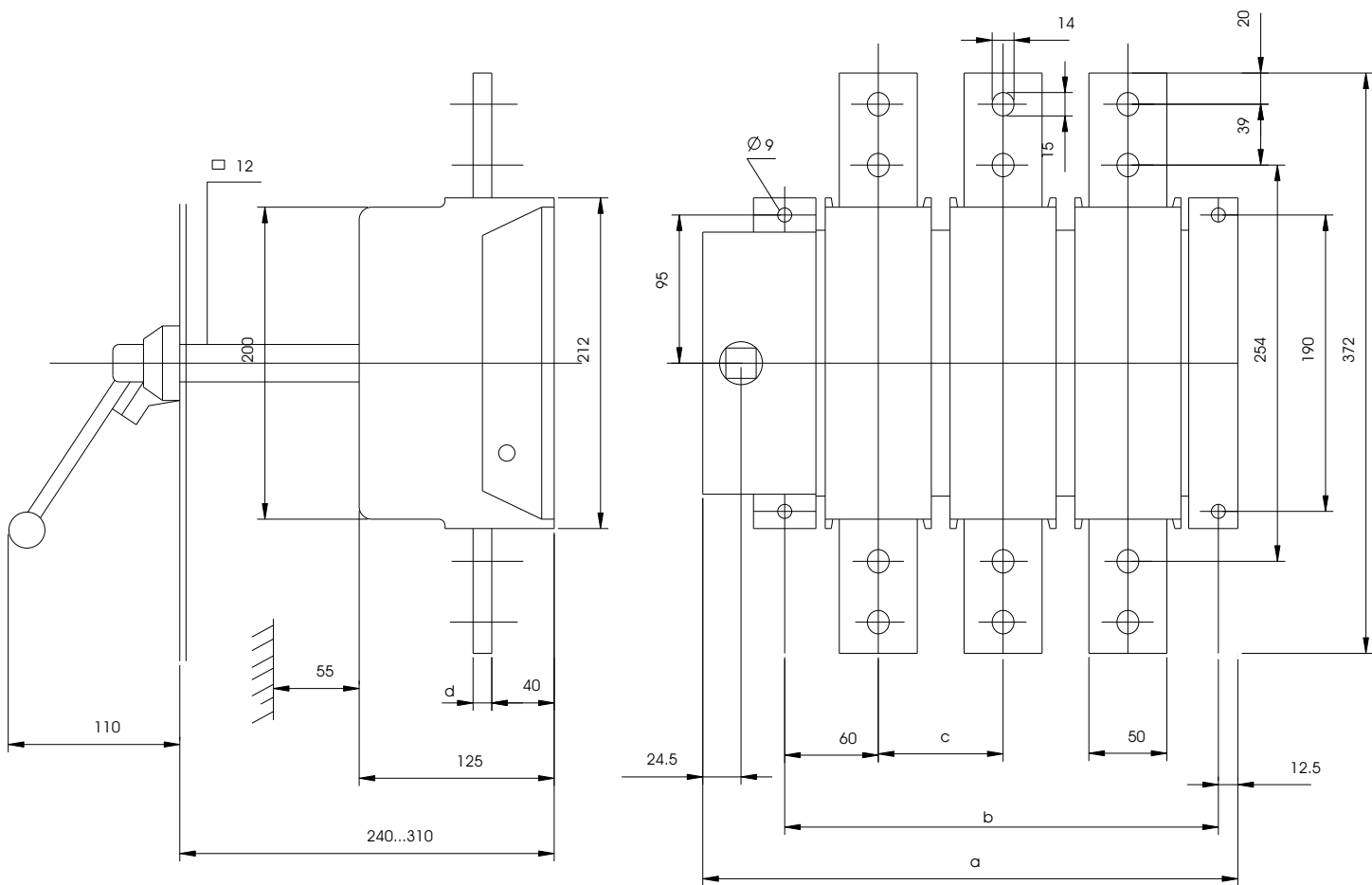
Sq. 12x255

CSSD 1000 K

CSSD 1600 K

CSSD 1250 K

CSSD 1800 K

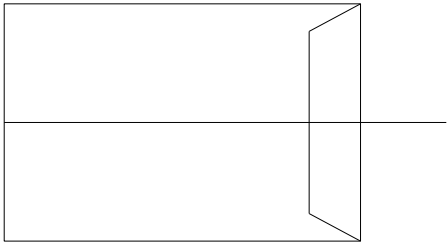


TYPE OF SWITCH	DIMENSION			
	a	b	c	d
CSSD 1000 K3	343	278	80	12
CSSD 1000 K4	423	358	80	12
CSSD 1250 K3	343	278	80	12
CSSD 1250 K4	423	358	80	12
CSSD 1600 K3	461	396	139	16
CSSD 1600 K4	600	535	139	16
CSSD 1800 K3	461	396	139	16
CSSD 1800K4	600	535	139	16

Connection busbars for CSSD 2500 K and CSSD 3150 K

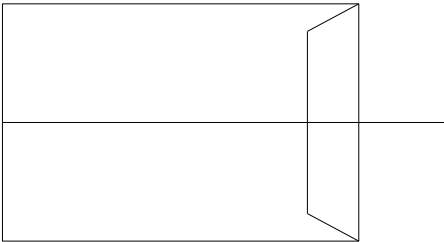
CSSD ZX 114

CSSD ZX 114/1



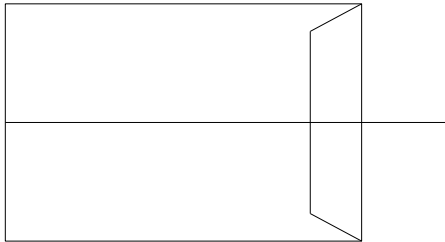
CSSD ZX 114

CSSD ZX 114/1



CSSD ZX 115

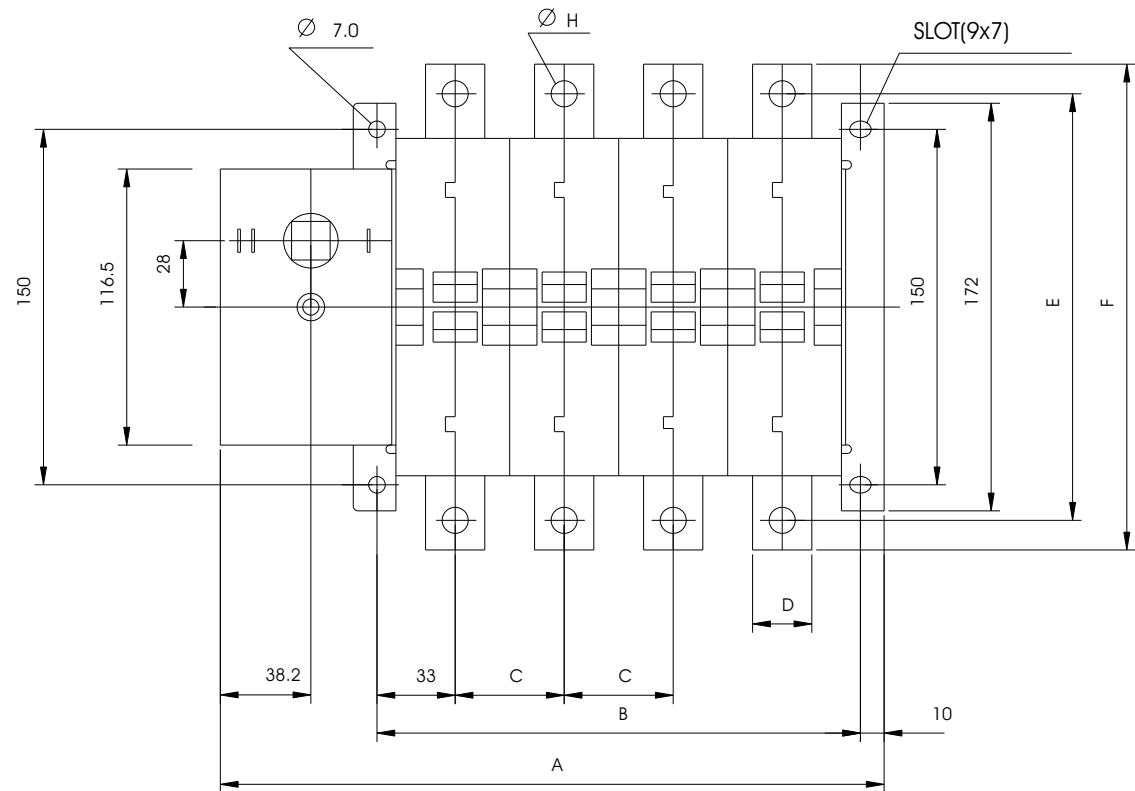
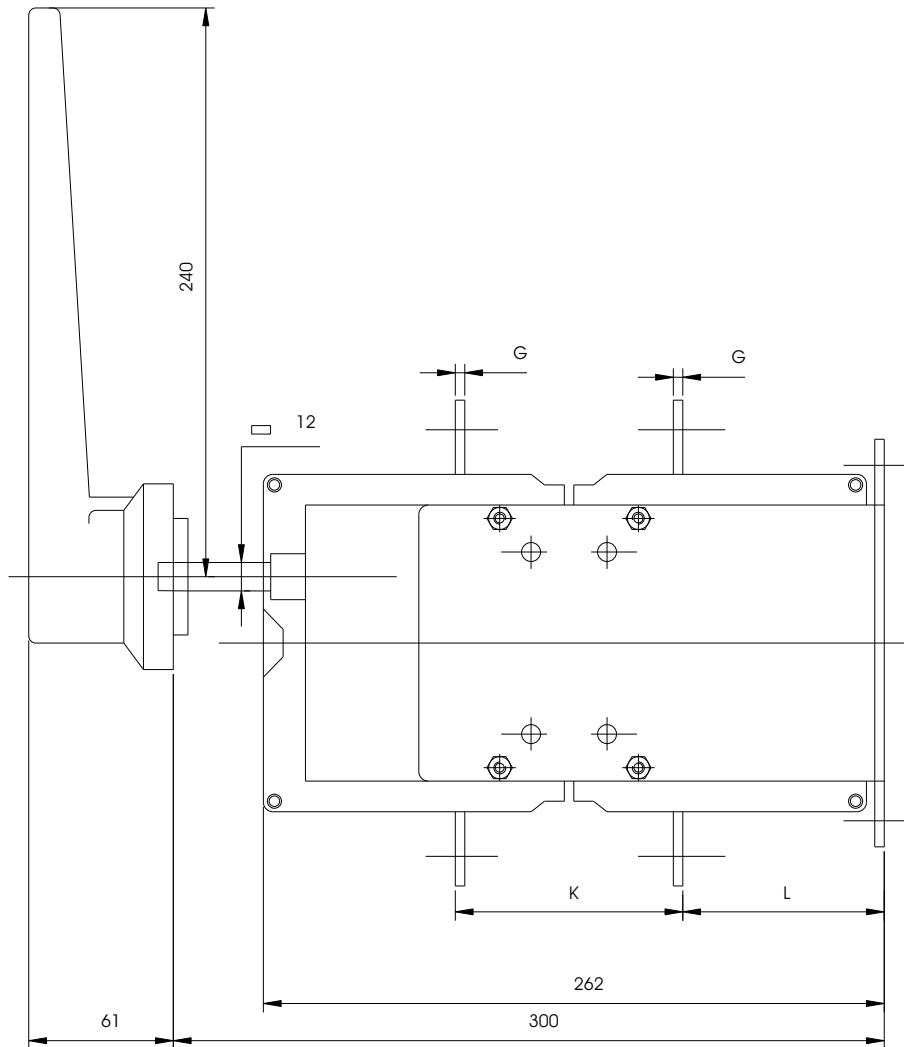
CSSD ZX 115/1



*Dimension 61 mm for plastic handle type CSDA 16

800A

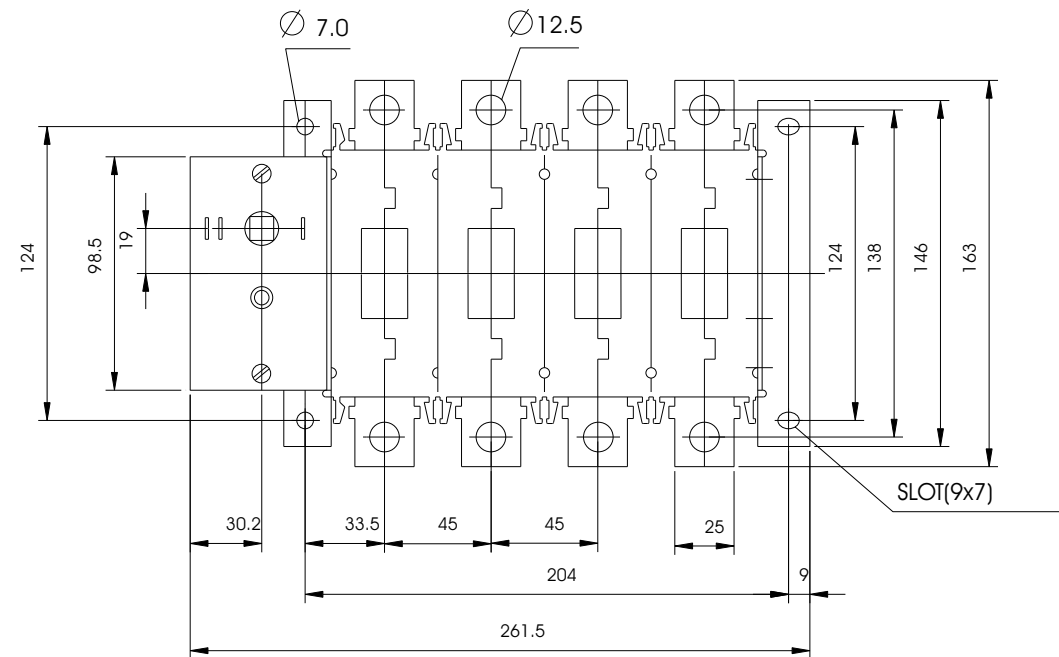
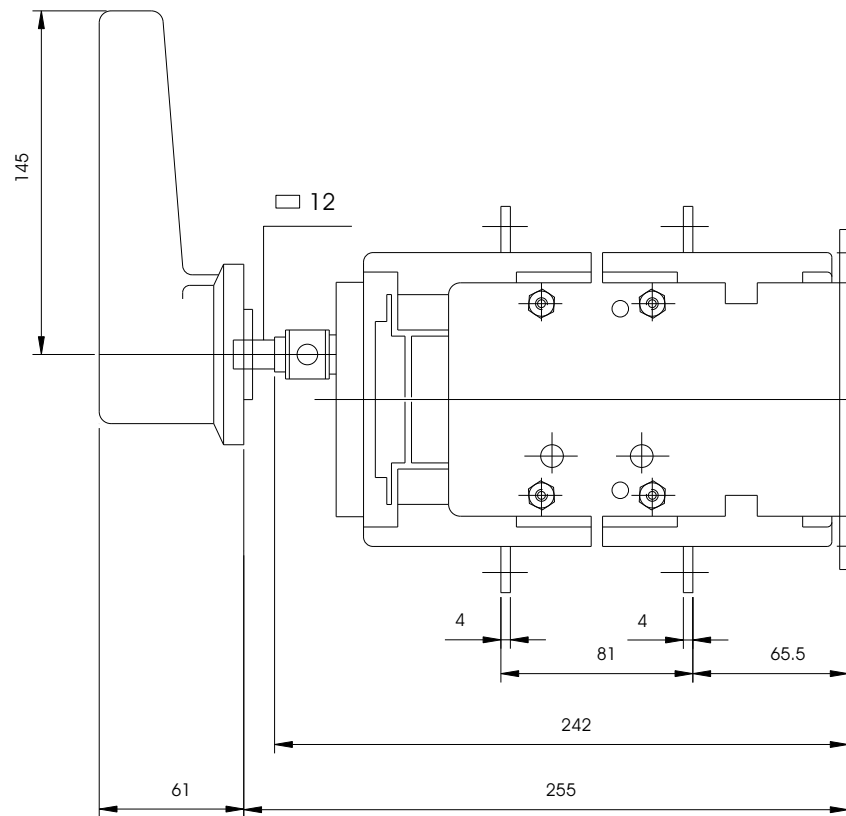
DIMENSIONS										
TYPE OF C/O SWITCH	A	B	C	D	E	F	G	H	K	L
CSCS 400D4	280	204	46	25	180	205	4	11.0	96	85
CSCS 630K4	328	252	62	40	185	223	5	13.5	98	84
CSCS 800D4	352	276	70	40	185	223	5	13.5	98	84



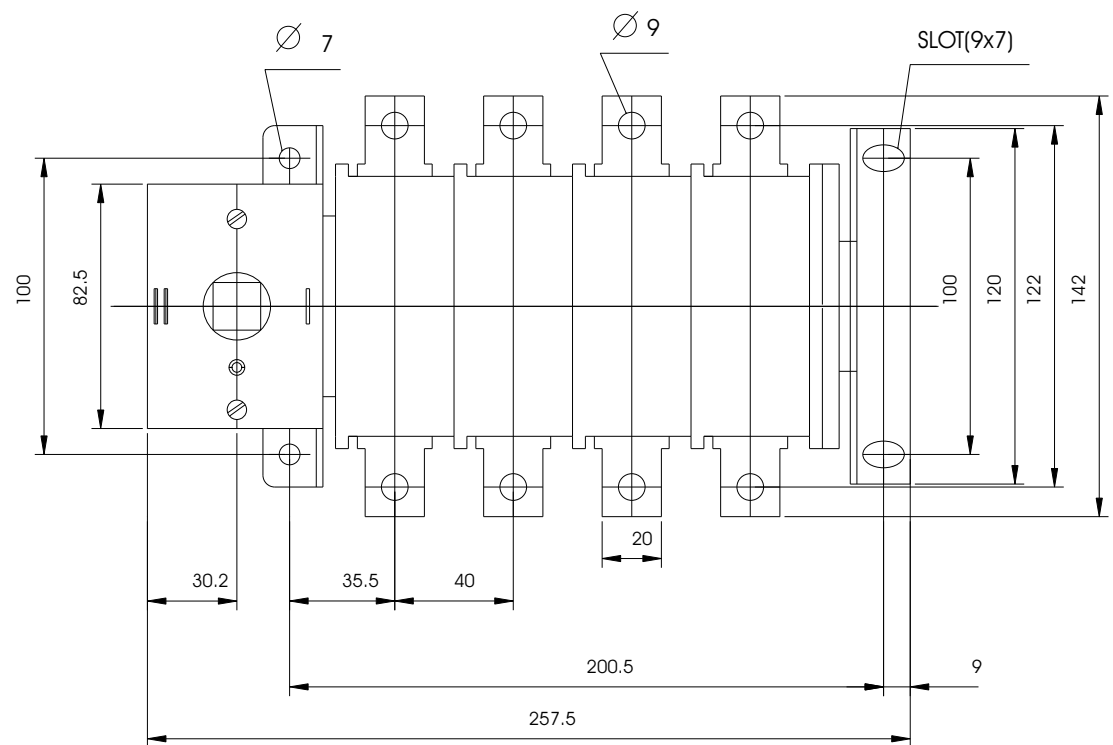
200A

250A

315A



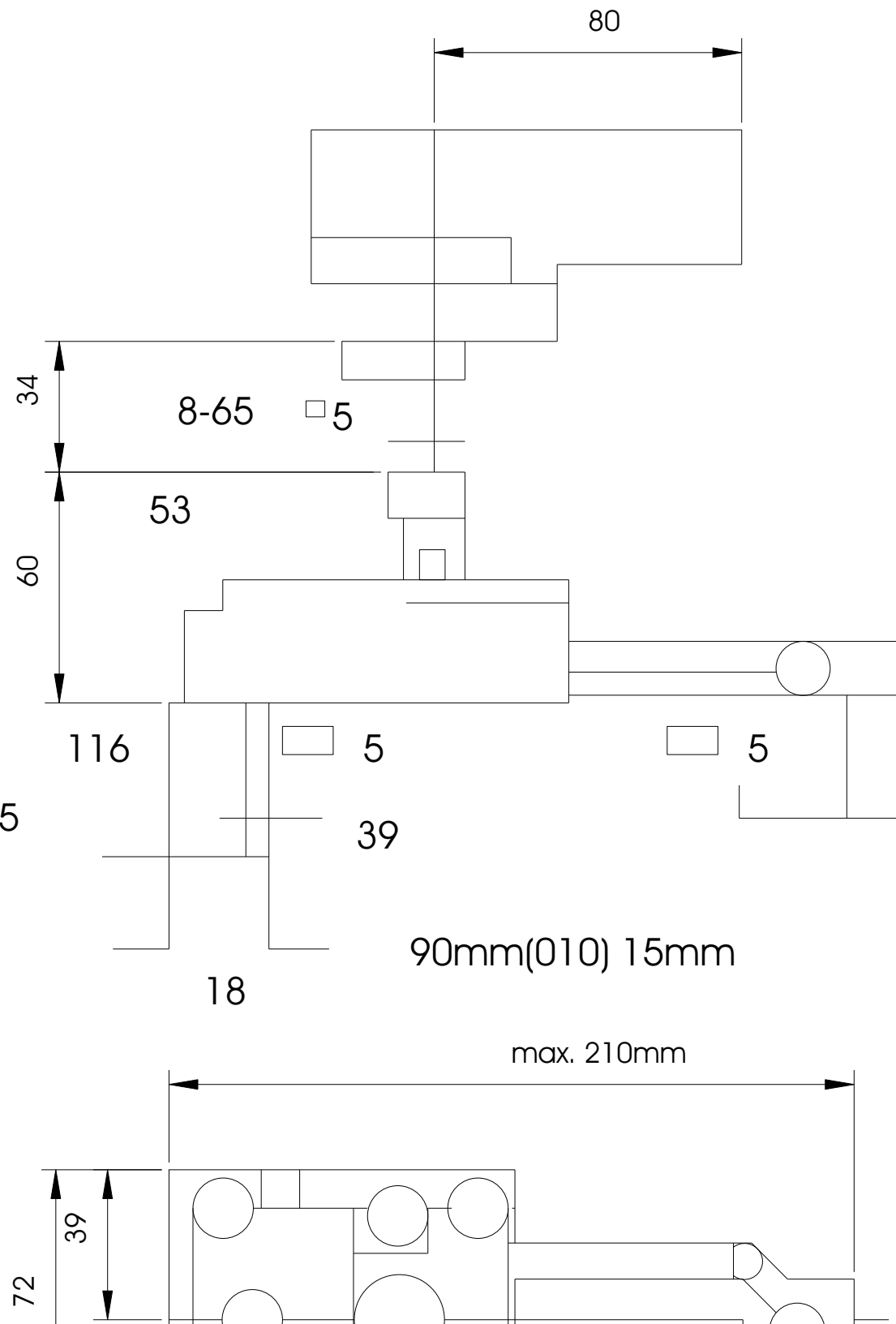
160A



CSDA 8

Shaft

Sq. 12x325

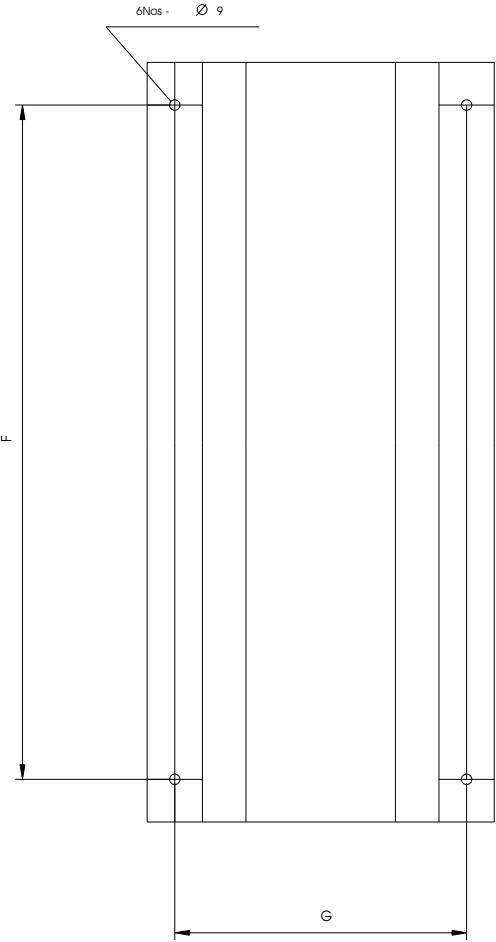
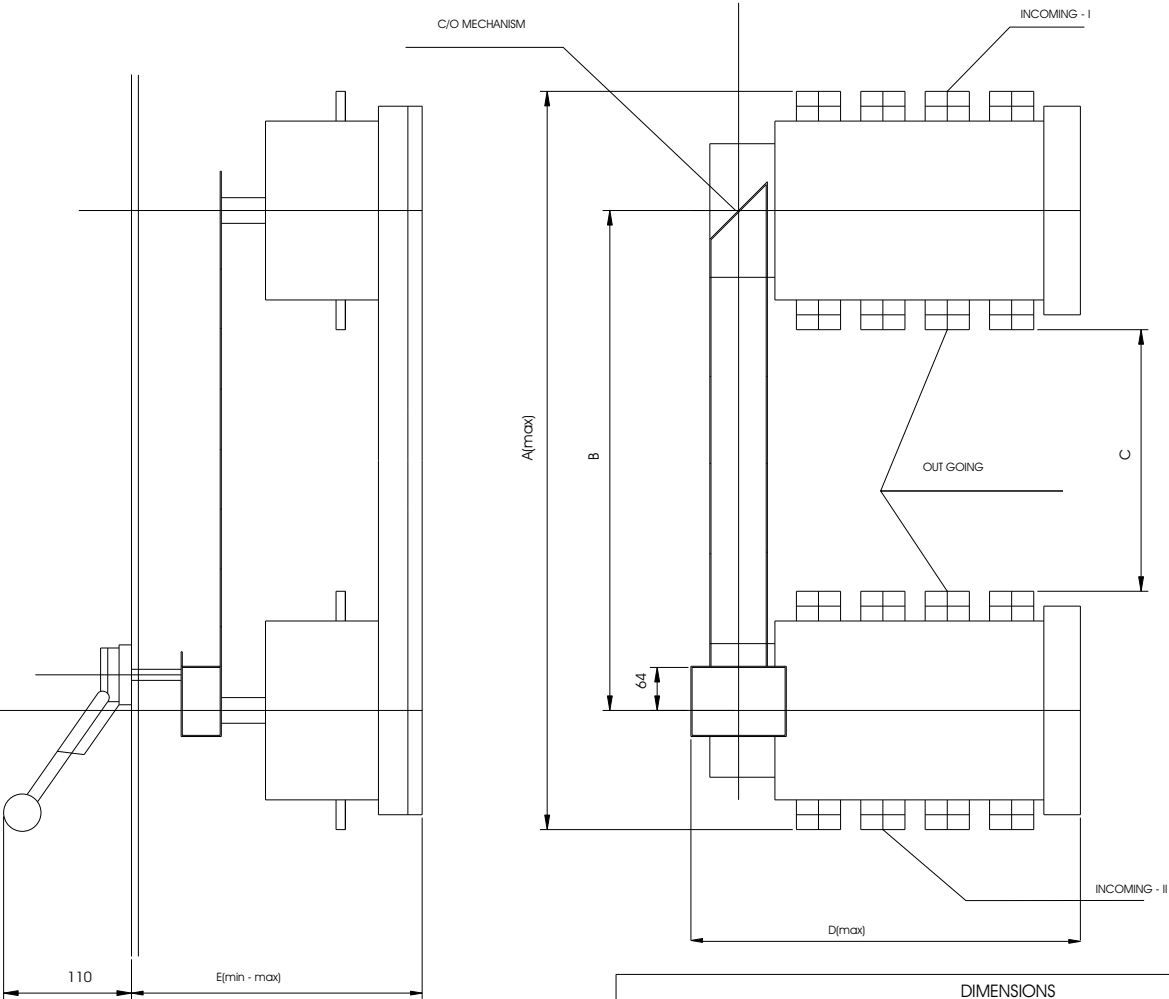


Changeover switch disconnecter

CSSD 200A - 3150 A C/O

%%UGENERAL ARRANGEMENT

%%UMOUNTING DETAILS



DIMENSIONS								TYPE OF C/O MECHANISM
TYPE OF C/O SWITCHES	A	B	C	D	E	F	G	
CSSD 200...400 D4 c/o	635	430	225	335	250...325	580	251	CSSD ZW 11
CSSD 630 K4 c/o	653	430	207	360	250...325	580	299	CSSD ZW 11
CSSD 800 K4 c/o	653	430	207	384	250...325	580	323	CSSD ZW 11
CSSD 1000/1250 K4 c/o	984	610	240	457	300...350	800	412	CSSD ZW 12
CSSD 1600/1800 K4 c/o	984	610	240	635	300...350	800	590	CSSD ZW 12
CSSD 2500/3150 K4 c/o	984	610	240	800	445...495	769	624	CSSD ZW 12

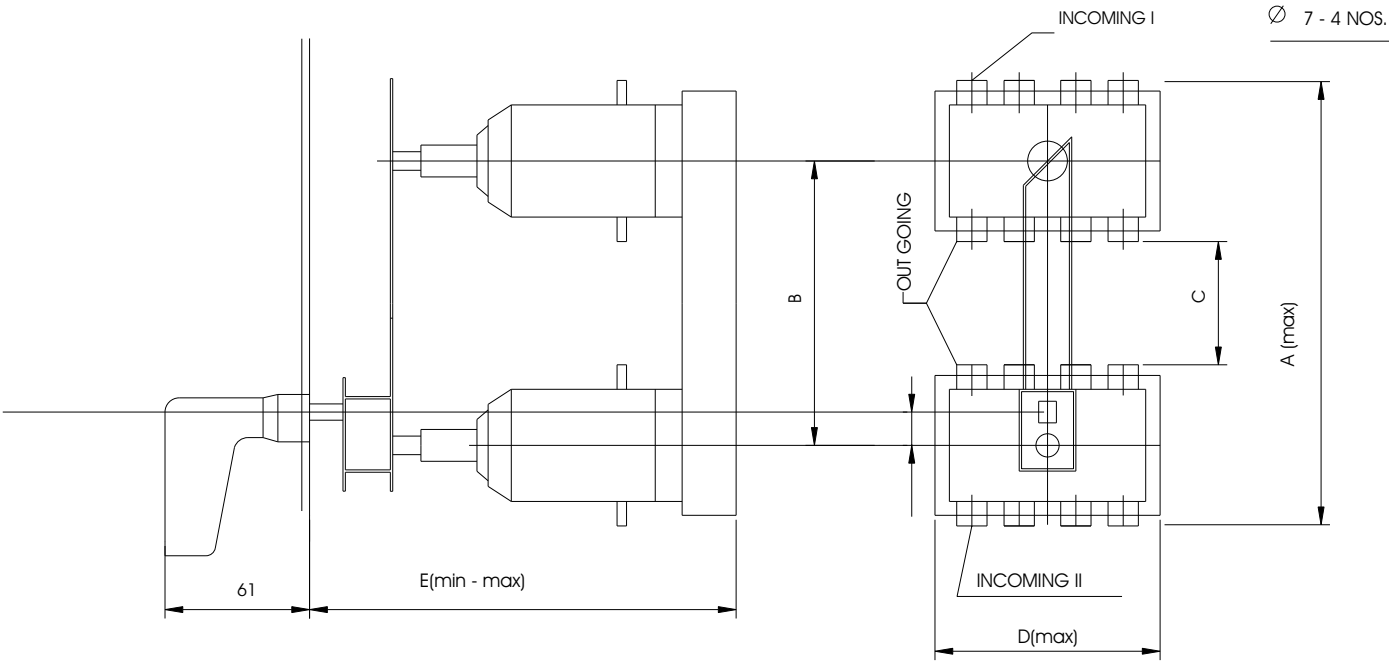


Changeover switch disconnecter

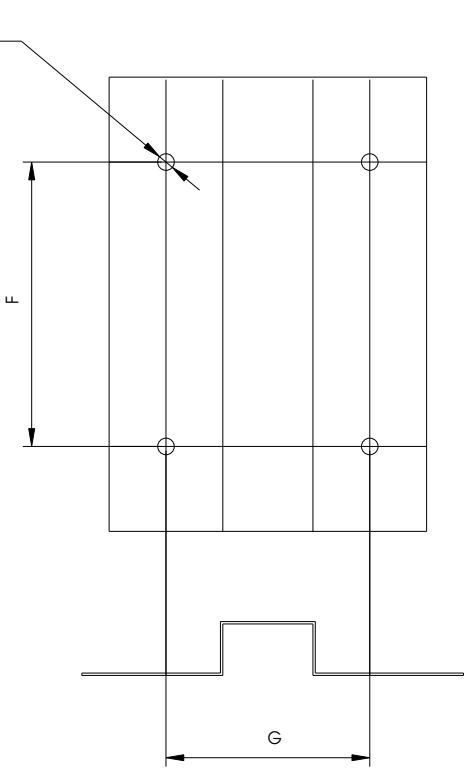
CSSD 25A - 125 A c/o

DIMENSIONS								TYPE OF C/O MECHANISM
TYPE OF C/O SWITCHES	A	B	C	D	E	F	G	
CSSD 25 D4 c/o	187	120	52	95	180...210	120	86	CSSD ZW 6
CSSD 40 D4 c/o	187	120	52	95	180...210	120	86	CSSD ZW 6
CSSD 63 D4 c/o	277	180	83	145	180...210	180	145	CSSD ZW 6
CSSD 125 D4 c/o	277	180	83	145	180...210	180	145	CSSD ZW 6

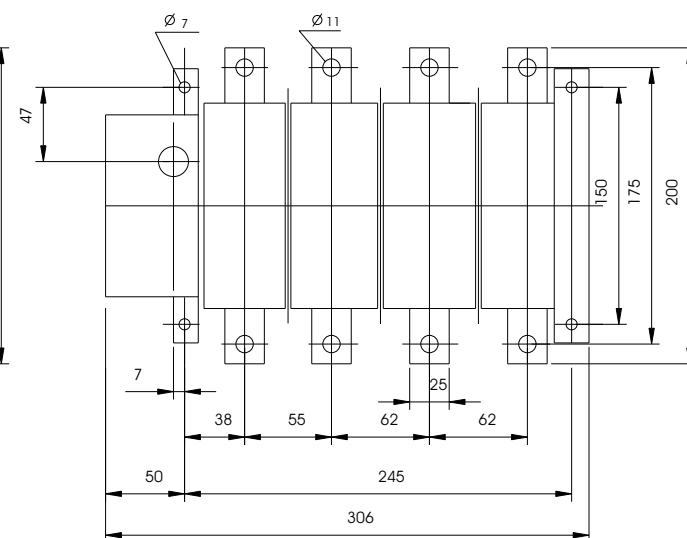
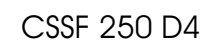
GENERAL ARRANGEMENT



MOUNTING DETAILS



Sq. 12 x 255

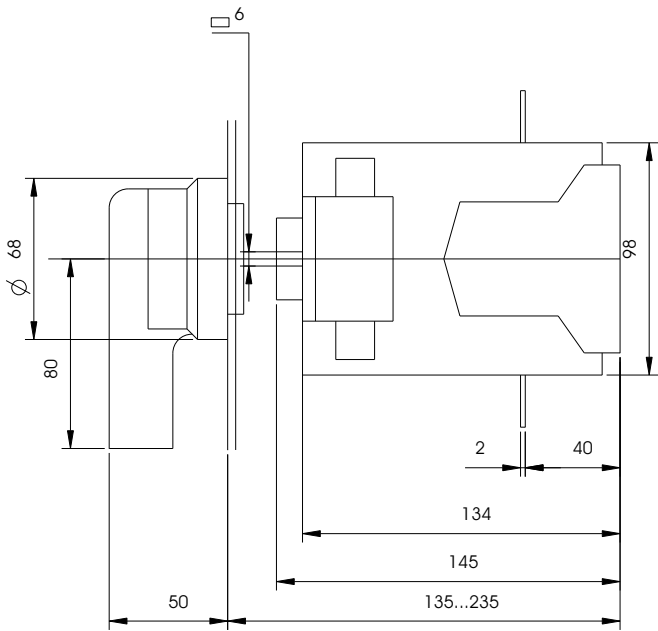


Handle:

CSDb 20

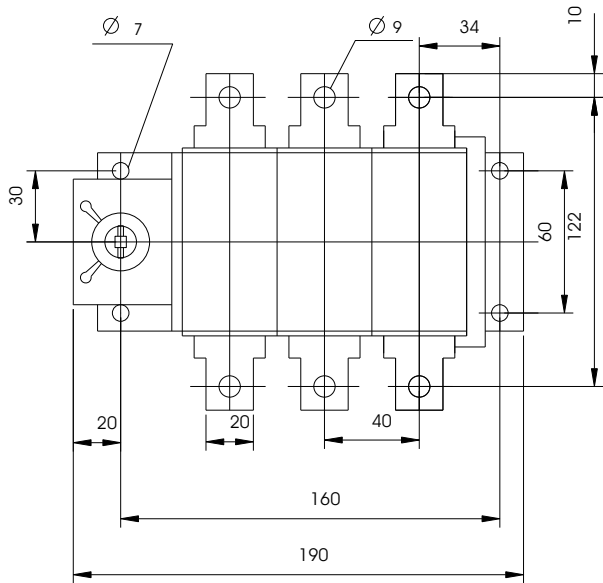
Shaft:

Sq. 6 x 165



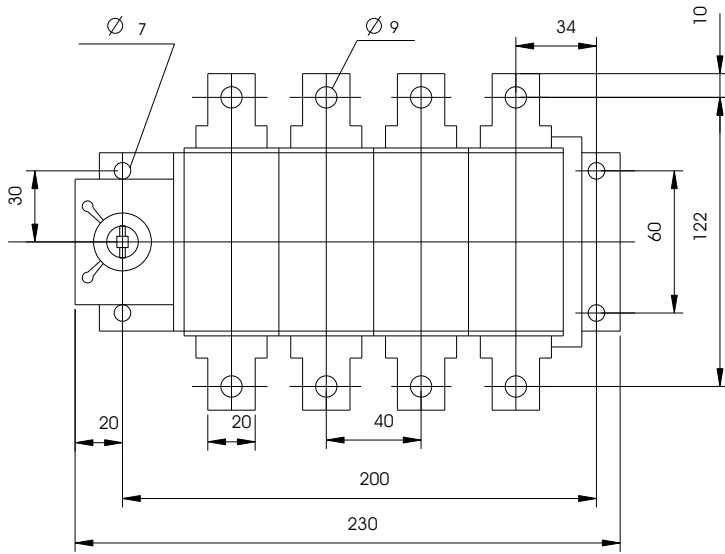
CSSF 100 B3

CSSF 125 D3



CSSF 100 B4

CSSF 125 D4

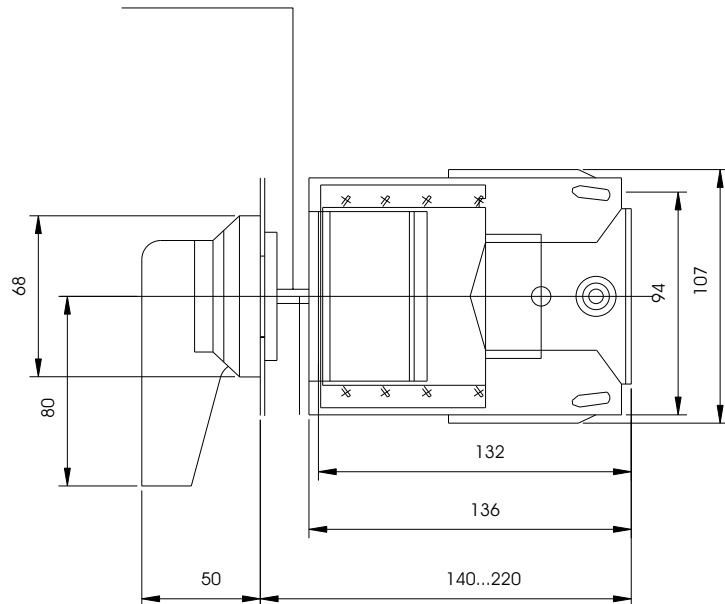


Handle:

CSDB 20

Shaft:

Sq. 6 x 165

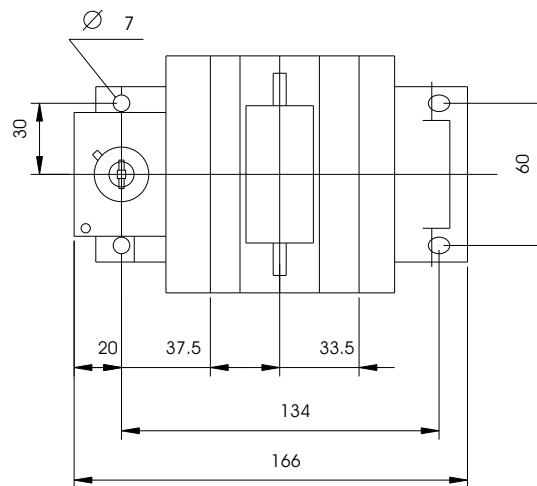


CSSF 32 D3

CSSF 63 D3

CSSF 32 B3

CSSF 63 B3

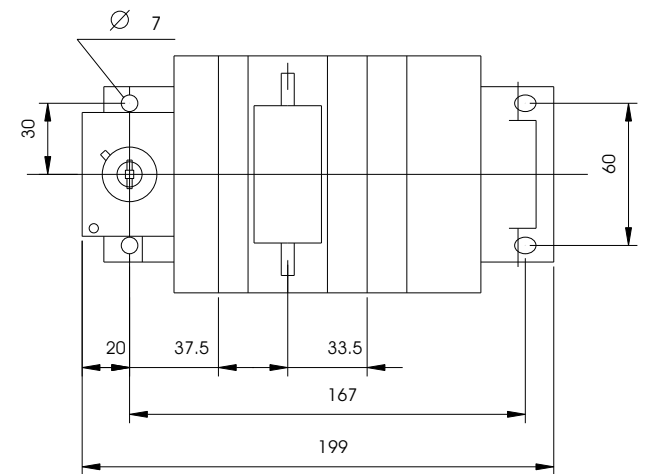


CSSF 32 D4

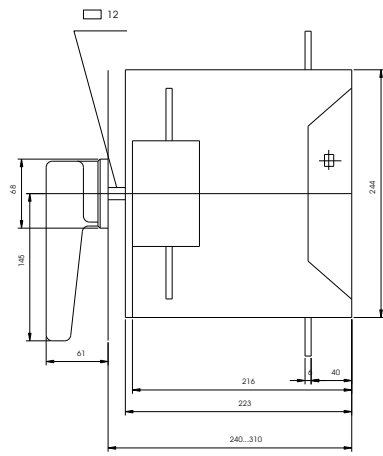
CSSF 63 D4

CSSF 32 B4

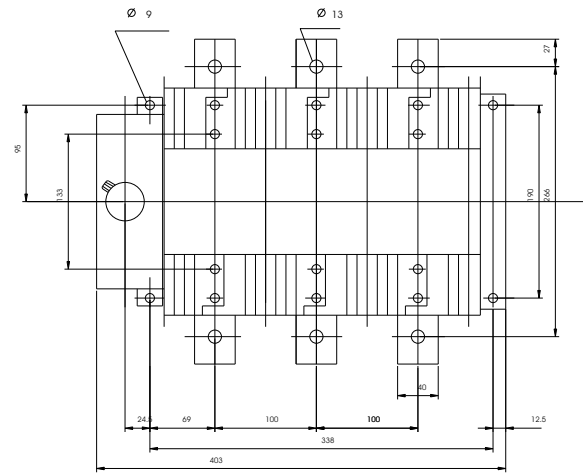
CSSF 63 B4



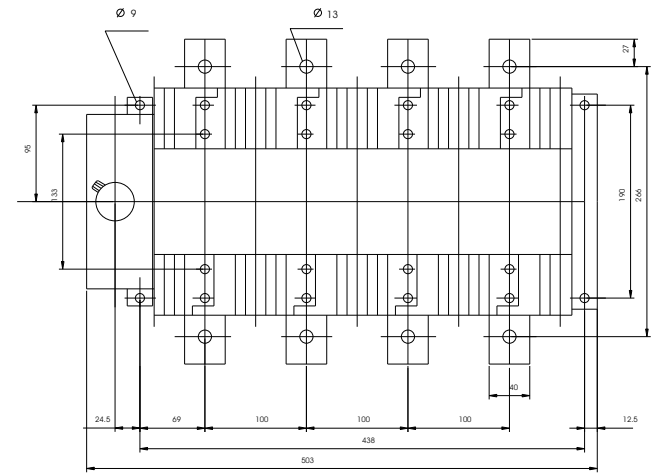
Sq. 12 x 255



CSSF 800 B3



CSSF 800 B4



Handle:

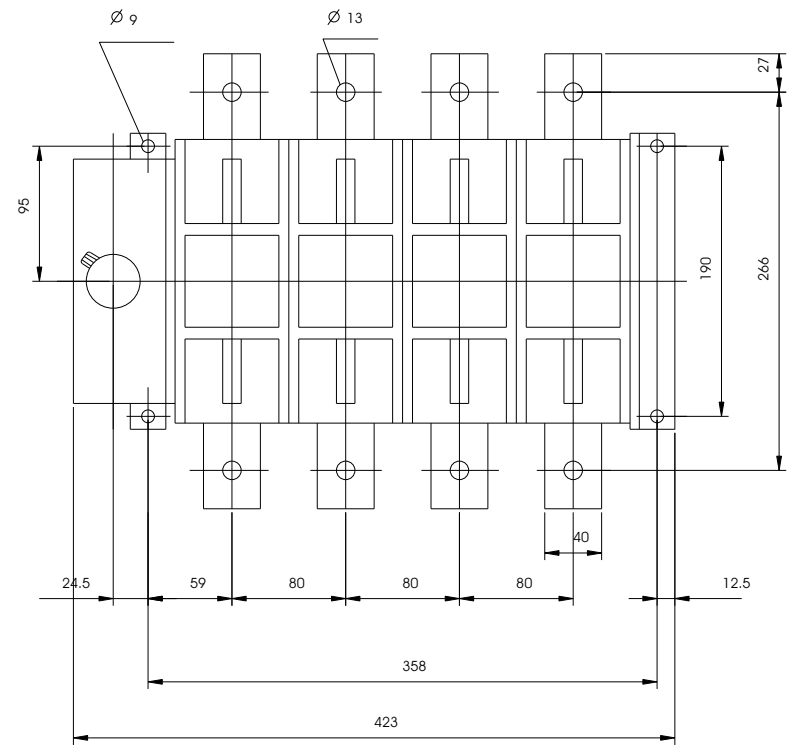
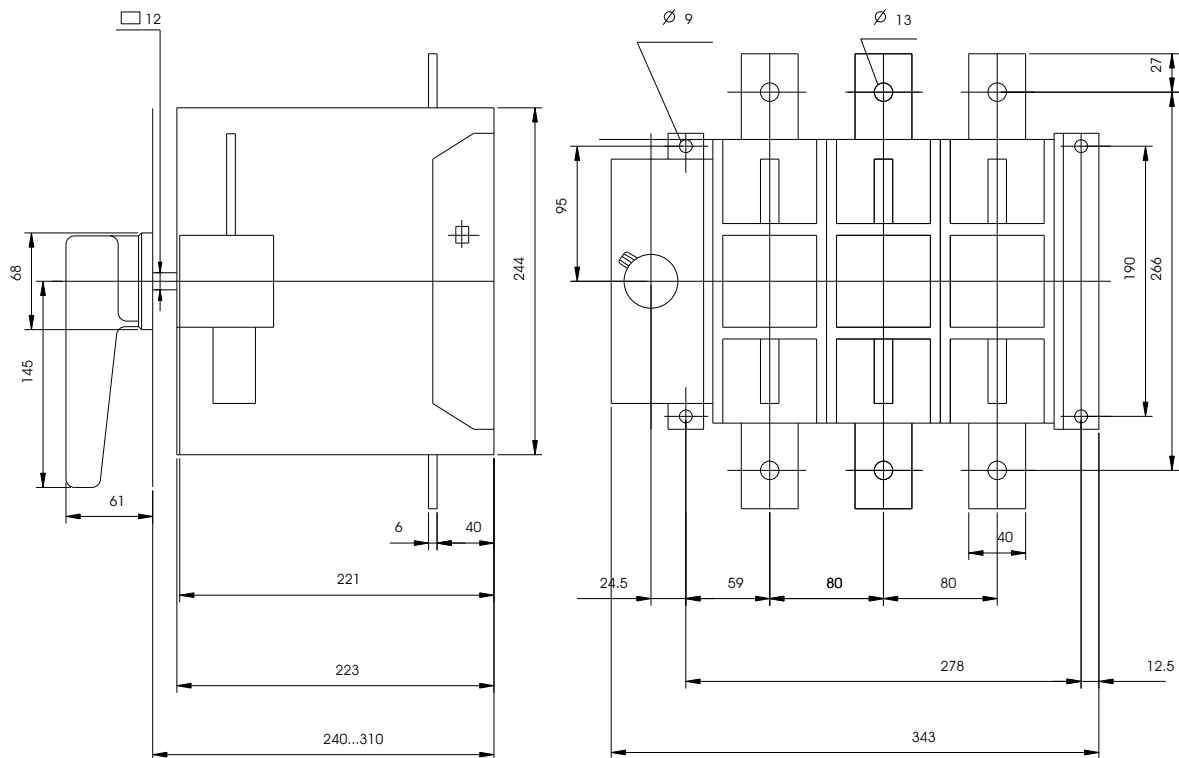
CSSF 630 D3

CSSF 630 D4

CSDB 16 * *

Shaft:

Sq. 12 x 255



Handle:

CSSF 315 B3

CSSF 315 B4

CSDB 16

CSSF 400 B3

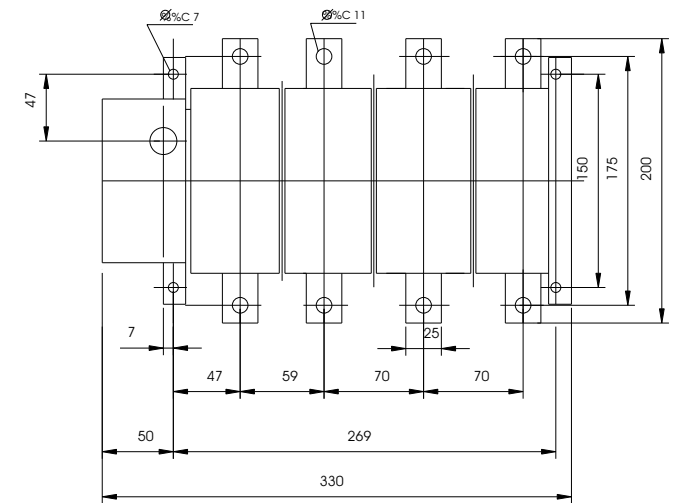
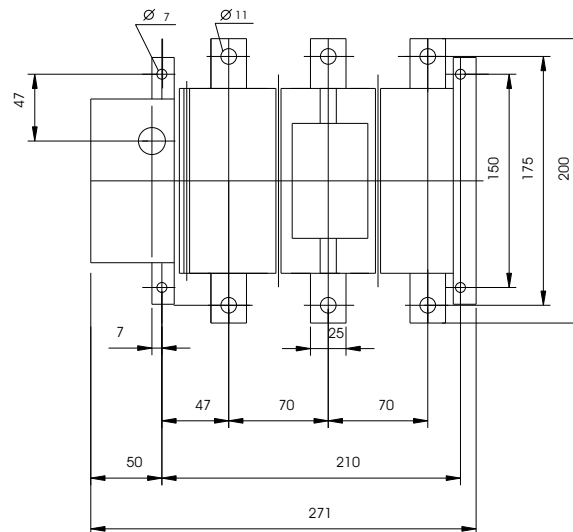
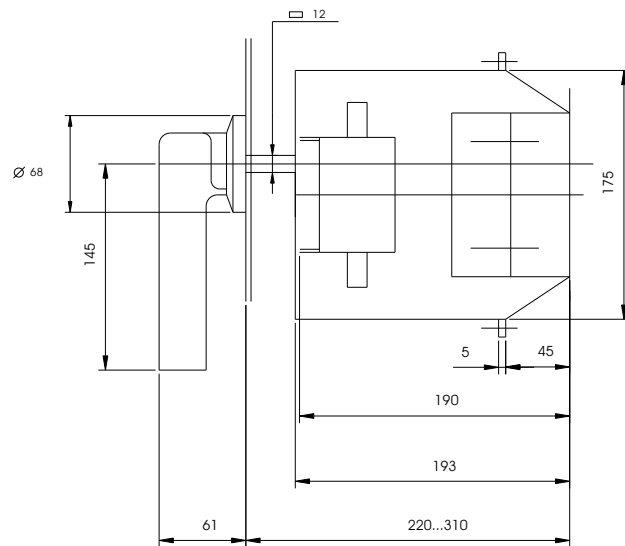
CSSF 400 B4

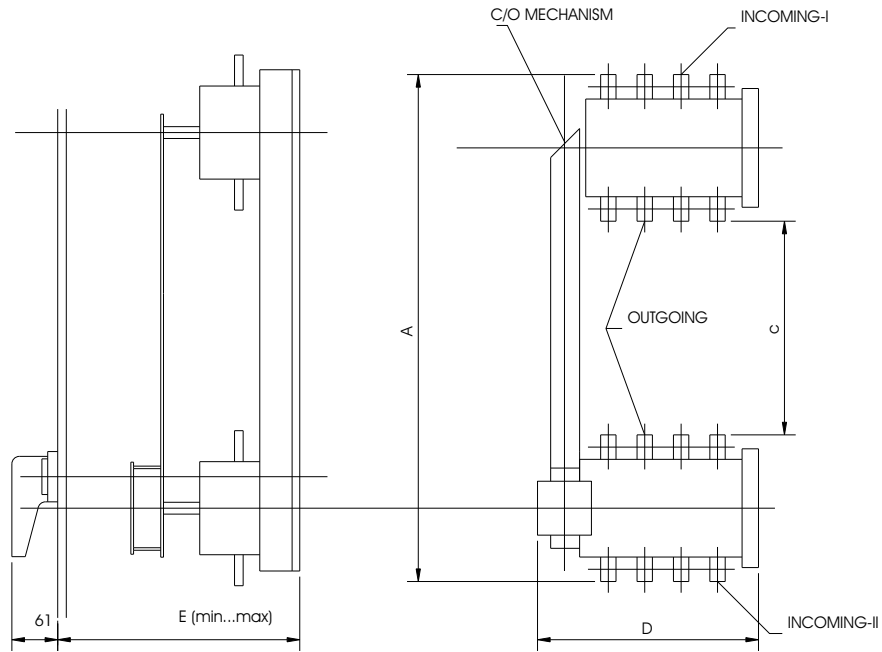
Shaft:

CSSF 400 D3

CSSF 400 D4

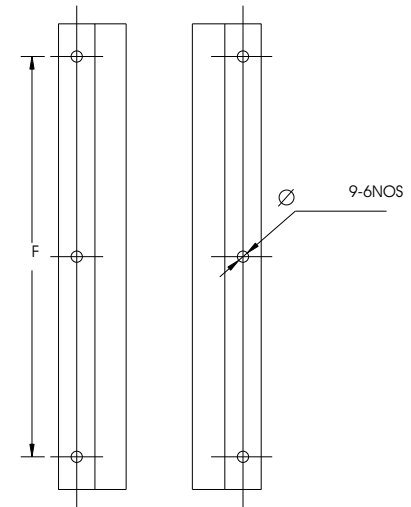
Sq. 12 x 255



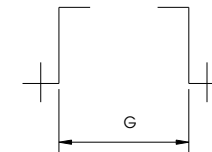


General Arrangement

Rating	Rating	Rating
32 to 125A	61	39
200 to 800A	110	84



MOUNTING DETAILS



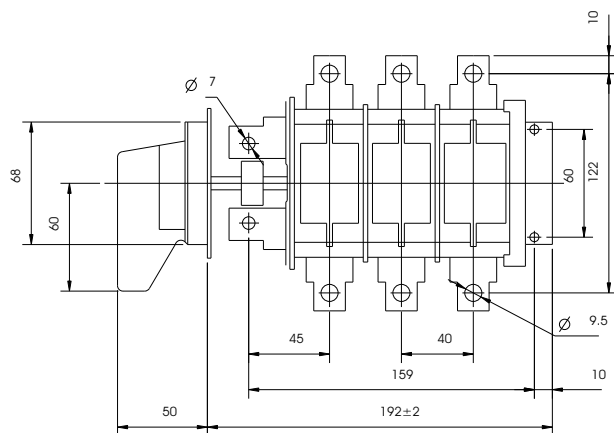
H = Distance between Panel door & top of Handle

J = Distace between Switch Shaft & handle shaft

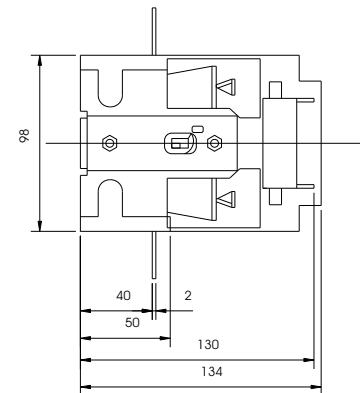
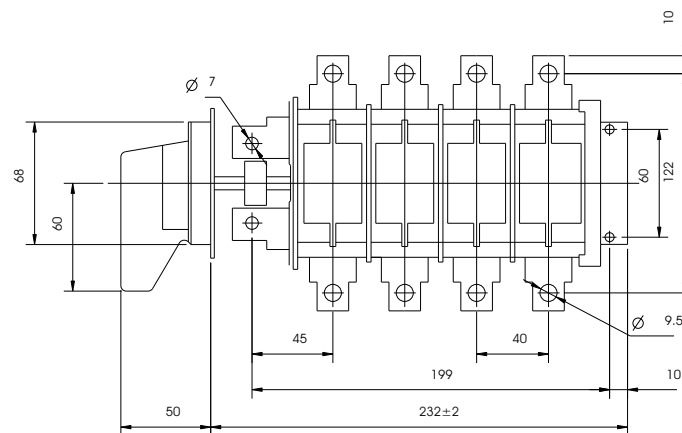
S.PNO	RATING OF C/O SWITCHES	DIMENSIONS (in mm)							TYPE OF C/O MECHANISM
		A	B	C	F	G	D	E	
1.	CSSF 32 D4 / 32 B4 / 63 D4 / 63 B4 C/O	345	240	130	240	215	240	270...340	CSSF ZW 1
2.	CSSF 125 D4 / 100 B4 C/O	382	240	98	240	254	275	270...340	CSSF ZW 1
3.	CSSF 200 B4 / 250 D4 C/O	630	430	230	580	300	370	275...350	CSSF ZW 12/1
4.	CSSF 315 B4 / 400 B4 C/O	630	430	230	580	323	393	275...350	CSSF ZW 12/1
5.	CSSF 630 D4 C/O	930	610	280	800	414	477	300...350	CSSF ZW 12
6.	CSSF 630 B4 / 800 B4 C/O	930	610	280	800	494	557	300...350	CSSF ZW 12

Handle:
CSDB 20

CSSF 125 D3
CSSF 100 B3



CSSF 125 D4
CSSF 100 B4



SIDE OPERATED SWITCH FUSES

- Handle: CSSF 32 D3
- CSDB 20 CSSF 63 D3
- CSSF 32 B3
- CSSF 63 B3

- CSSF 32 D4
- CSSF 63 D4
- CSSF 32 B4
- CSSF 63 B4

